



# **SOFTWARE TEST-SUITE FOR COMPUTER ENERGY EFFICIENCY MEASUREMENT**

WEBINAR

---

Andoni Arregui, Thomas Wucher, and Joan Roig

2022-09-20

GTD GmbH

# TABLE OF CONTENTS

1. Testing Tool Architecture
2. Test Setup and Procedure
3. Test Worklet Analysis

## Who we are and what we do:

- We are a software company in the south of Germany
- Part of the European group GTD with headquarters in Barcelona, founded in 1987

## We mainly work for:

- European Space Agency (ESA)
- German Aerospace Center (DLR)
- German federal institutions (UBA, BAM)

**Since 2019 we have our software in space**

# TESTING TOOL ARCHITECTURE

---

The main characteristics of the Test Suite developed by GTD are:

- It is based on the **open-source** Phoronix Test Suite
- It runs a **series** of **worklets**<sup>1</sup>
- It executes **native binaries** in Microsoft Windows, MacOSX, and Linux (incl. ChromeOS)
- Measuring power **does not alter** the **performance** or the **power demand**
- All the results are fused together in a **single meta-efficiency metric** value

---

<sup>1</sup>A *worklet* is a set of tasks, placed in a *workflow*, that is, in a sequence of activities that can be easily reproduced on a regular basis.



Phoronix Test Suite<sup>2</sup> is an open-source framework for automated benchmarking:

- Runs on Microsoft Windows, Linux, MacOSX (written in PHP)
- Automates the whole testing process from dependency installation to test results aggregation
- Has a huge collection of predefined test-profiles (i.e., worklets)
- Easily extensible for our use-case (e.g., new worklets)
- Results can be visualized by Phoronix Result-Viewer or exported to CSV
- Support for power measurement devices
- No external connection is required to execute the worklets

<sup>2</sup><https://www.phoronix-test-suite.com/>

Several changes were necessary to make Phoronix Test Suite work for our purpose:

- Support merging power data after running all tests
- Define and implement support for calculating efficiency for lower is better result units
- Support power measurements on Windows
- Support the result viewer on Windows
- Make the installation of PHP more robust on Windows
- Add better CSV exports
- Other small bug fixes and optimizations

Each worklet consists of the following parts:

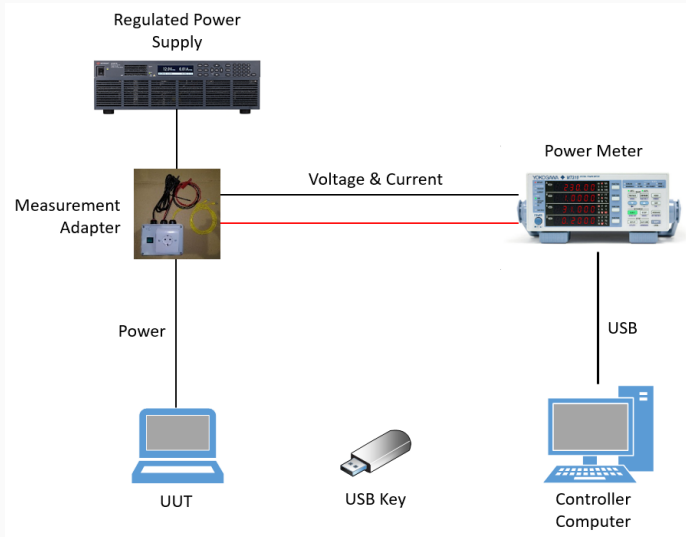
- Test definition
- Results definition
- Downloads definition
- Installation script
- Run script

Definition files are written in XML, scripts are shell scripts.



A test suite defines:

- Series of worklets to be run
- Configuration options for each worklet



Reading data from power meters is done by using *sigrok*, an open-source signal analysis software suite.

- sigrok is cross-platform, supporting Windows, MacOSX, Linux
- sigrok is vendor-independant, supporting devices from different manufacturers
- We added support for
  - Yokogawa WT310(E), WT333, WT500
  - Hioki PW3335, 3332

Power meters connected via GPIB are read using a specifically created Python application using librevisa.

On the controller the following pieces of software are installed:

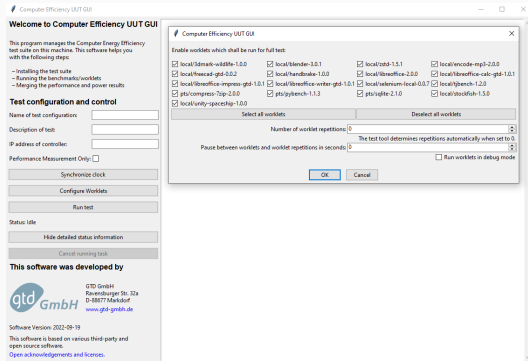
- PHP (and its dependency, the Visual C++ redistributable package)
- Driver for USB-connected power meters
- NTP server (for time synchronization)
- Phoronix Test Suite configuration (e.g. to configure the result viewer)

On the EUT the following pieces of software are installed:

- PHP (and its dependency, the Visual C++ redistributable package)
- NTP client (for time synchronization)
- Third party applications used for testing (Libreoffice, FreeCAD, Blender, ...)
- Cygwin (to run the worklet scripts, only on MS Windows)
- Phoronix Test Suite configuration
- Phoronix Test Suite
- All relevant worklets according to their definition files

The GUI of the test software is

- written in Python and packaged with pyinstaller
- developed using the tkinter widget toolkit
- only a frontend to various shell and batch scripts



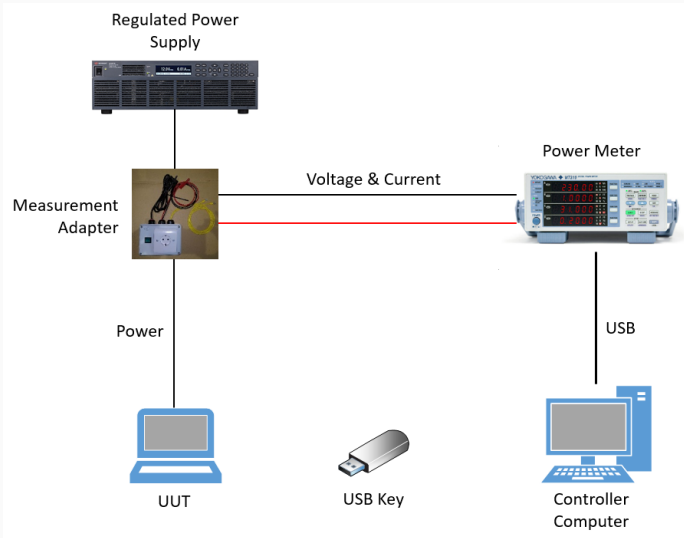
The CLI is implemented through scripts for each operating system to

- Install the controller software
- Install the EUT software
- Check connection to the power meter
- Run the full benchmark
- Run the result viewer
- Start acquiring power measurements
- Start the NTP time server
- Synchronize the time to a given timeserver
- Uninstall the software
- Update an existing USB key to the latest version
- Run arbitrary PTS commands (development and debugging)

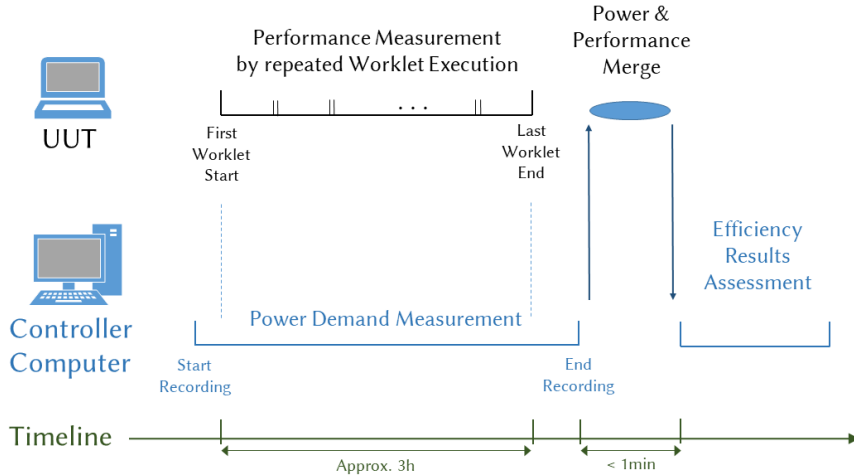
## **TEST SETUP AND PROCEDURE**

---





# TEST SUITE EXECUTION WORKFLOW



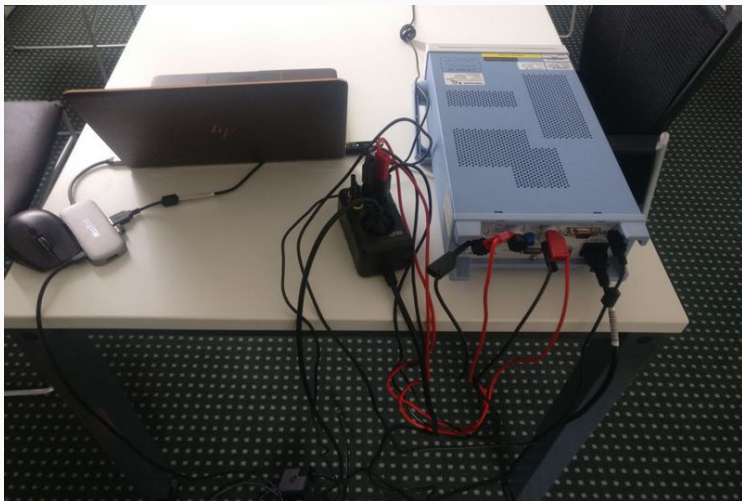
In a live demo we will show the following steps:

- Installation on the EUT
- Installation on the Controller
- Starting the software on Controller and EUT
- Synchronize the time
- Run a few selected worklets
- Merge the power and performance data
- Display the test results
- Uninstall the software

# DEMO SETUP



## DEMO SETUP



# TEST WORKLET ANALYSIS

---

- Re-using existing benchmark software
- Re-using existing real world applications
- Testing all relevant use cases for a computer
- Simple test setup (i.e. no complicated network setup needed)
- Open architecture for framework and worklets

## CRITERIA FOR AN EXISTING WORKLET TO BE CONSIDERED

- Supported on all relevant operating systems
- Free and Open-Source (exception possible)
- Actively maintained
- Simulates workloads of typical users
- Automation possible
- No additional testing setup needed
- Performance and power results are consistent and repeatable



- Add support for missing operating systems
- Allow worklets to run offline
- Include as many dependencies as possible for offline install
- Automate the (un)installation as much as possible
- Check that all worklets run on all expected computer configurations

# WHAT WORKLETS ARE AVAILABLE? (RENDERING AND CAD)

## Blender

- Popular 3D modelling and video editing application
- Different 3D models available for testing
- Can render only on the CPU or via OpenCL, CUDA
- Result in seconds needed for the rendering

## FreeCAD

- Newly developed worklet to simulate CAD usage profiles
- Uses an unmodified version of FreeCAD
- Creates a CAD model via FreeCAD's API
- Result in seconds needed for creating the CAD model

# WHAT WORKLETS ARE AVAILABLE? (COMPRESSION)

## 7-Zip Compression

- Compresses a file with the 7-Zip compression tool
- Result in million instructions per second (MIPS)

## Zstd Compression and Decompression

- Compresses a file with the zstd compression algorithm
- Zstd is a more modern algorithm than used in other worklets
- Multi-threaded
- Result in MB per second of compression throughput

## WHAT WORKLETS ARE AVAILABLE? (OFFICE TASKS)

### LibreOffice PDF conversion

- Converts several LibreOffice documents to PDF format
- Uses an unmodified version of LibreOffice
- Result in seconds needed for converting 20 documents

### LibreOffice Spreadsheet/Presentation/Writer

- Newly developed worklet to measure spreadsheet performance
- Creates documents with various numbers, formulas, graphs, images, text
- Uses an unmodified version of LibreOffice
- Result in seconds needed for creating a spreadsheet/presentation/text document

### Selenium

- Selenium is a browser automation tool, often used for testing websites
- Automates Google Chrome to measure Browser performance
- Runs the JavaScript benchmark Kraken
- Result in milliseconds for the average benchmark task

# WHAT WORKLETS ARE AVAILABLE? (ARTIFICIAL INTELLIGENCE)

## Stockfish

- Open Source Chess Engine
- Plays several chess games using its neural network based AI
- Result in nodes per second

# WHAT WORKLETS ARE AVAILABLE? (IMAGE AND AUDIO/VIDEO PROCESSING)

## tjbench

- JPEG compression/decompression benchmark part of libjpeg-turbo
- Measure performance of reading and writing images in JPEG format
- Result in megapixels per second

## MP3 Encoding

- Encoding a file to MP3 format using lame encoder
- Result in seconds needed for encoding the test file

## Handbrake

- Hardware accelerated video transcoding
- AMD, Apple, Intel and NVidia accelerators supported, with software encoding fallback
- Transcodes a H.264 encoded video to H.265
- Result in seconds needed for encoding the test file

# WHAT WORKLETS ARE AVAILABLE? (DATABASE)

## SQLite

- Implements a simple file database
- Measures the performance of creating and querying a test database
- Can be configured to run with different amounts of threads
- Result in seconds needed for running a defined set of queries



# WHAT WORKLETS ARE AVAILABLE? (PROGRAMMING LANGUAGES)

## PyBench

- Benchmark written in Python language
- Measures the performance of the Python interpreter on the system
- Average time needed for the test in milliseconds

# WHAT WORKLETS ARE AVAILABLE? (3D GRAPHICS)

## 3DMark Wildlife Extreme

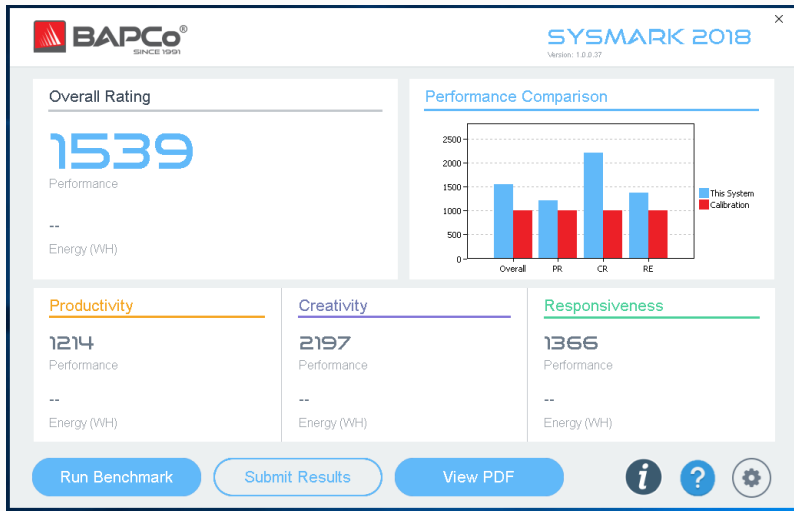
- Graphics benchmark as known from the 3DMark benchmarks
- Renders several realistic scenes in 4K UHD resolution
- Result in average frames per second

## Unity Spaceship

- Graphics benchmark provided by Unity
- Renders several realistic scenes using the Unity engine
- Result in average frames per second

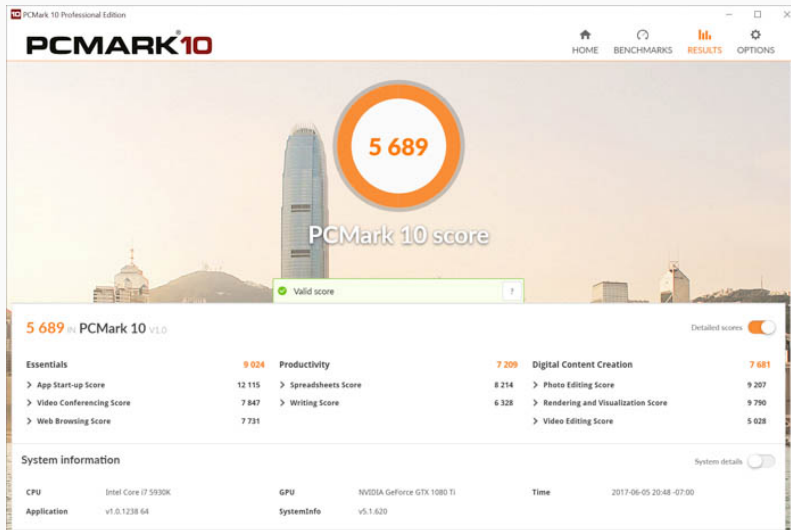
- SysMark benchmarks unmodified real-world applications
- Different scenarios for different usage profiles
- Focused on office and productivity workloads, e.g. no gaming
- Approximate run time is 1 hour
- Measures energy consumption
- Proprietary test framework and worklets
- Supports Windows only

# SYSMARK RESULTS

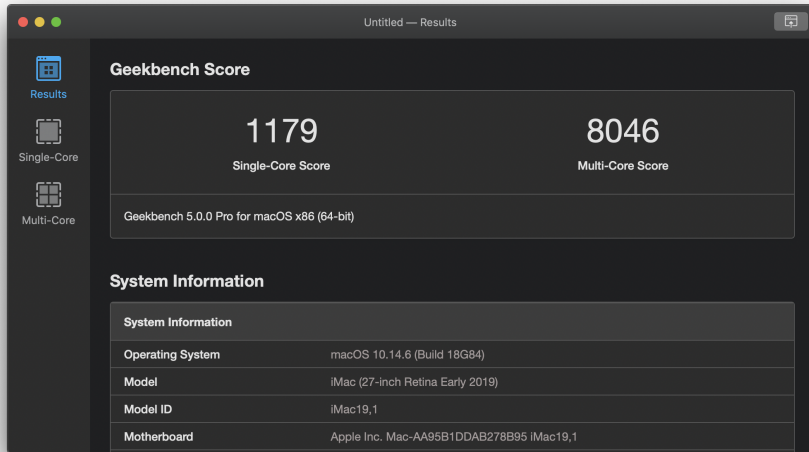


- PCMark does use some real-world applications but also synthetic workloads
- Different scenarios for different usage profiles
- Focused on office, productivity workloads
- Gaming workloads only in extended version
- Approximate run time is 30 minutes for the extended version
- Has a profile to measure battery life in hours for different scenarios
- Proprietary test framework and worklets
- Supports Windows only

# PCMark10 RESULTS



- Geekbench does not use real-world applications but claims to be simulating common tasks
- No different scenarios, only single core and multi core benchmarks
- Does not measure any energy consumption
- Proprietary test framework and worklets
- Supports Windows, MacOSX, Linux, Android, iOS





The test software, test procedure, this presentation and other resources are available via the following website:

[gtd-gmbh.de/computer-energy-efficiency-tool](http://gtd-gmbh.de/computer-energy-efficiency-tool)

[clasp.ngo/tools/on-mode-computer-testing-tool](http://clasp.ngo/tools/on-mode-computer-testing-tool)

